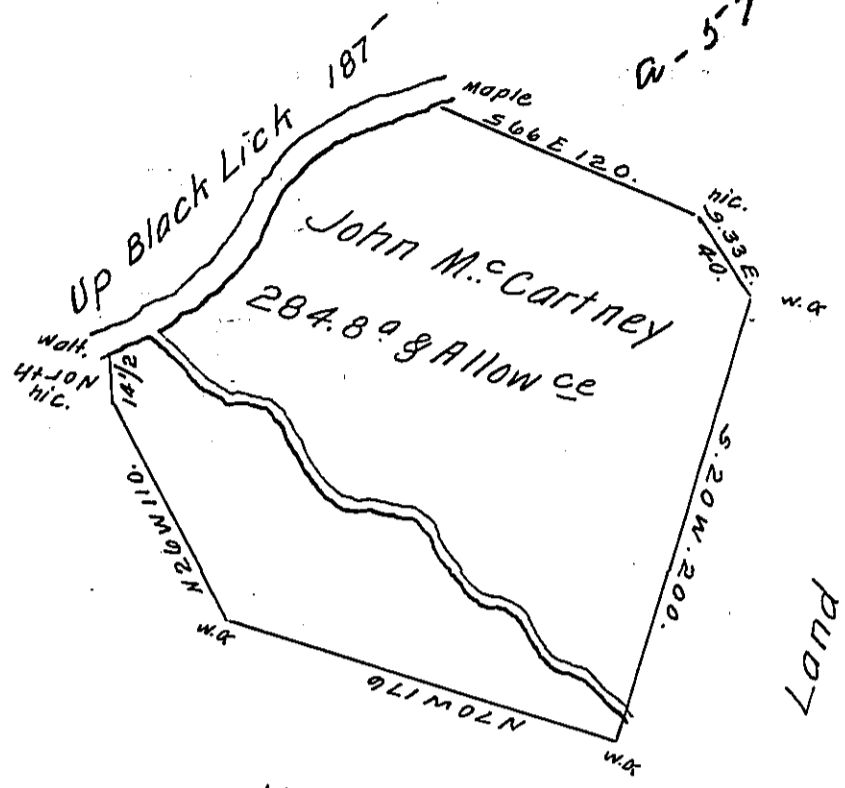


The Courses & Distances up the Creek

N 73 E 45
N 38 E 80
N 70 E 62.

Vacant W-57-194



A13-227

Vacant C-9A-281

D-28-220

Survey'd to John McCartney on the 29th Day of April 1774. The above Described Tract of Two hundred eighty four Acres & three quarters of an Acre & the usual allowance of six per Cent. Situate on the — side of Black Lick Creek Opposite Edward Fowlers Improvement in Westmorland County. By Warrant of the 7th day of December 1773.

Per Joshua Elder

To John Lukens Esq^r S. Gen^l

D. S.

IN TESTIMONY that the above is a copy of the original remaining on file in the Department of Internal Affairs of Pennsylvania, made conformably to an Act of Assembly approved the 16th day of February, 1833, I have hereunto set my Hand and caused the Seal of said Department to be affixed at Harrisburg, this sixth day of February 1911.

Nenny Houck
Secretary of Internal Affairs.